

One Touch Fitting

How to Order



EC 08 02 - []

① ② ③ ④

① Series

Refer to the following table

② Tube outer diameter

03 : Ø3
04 : Ø4
06 : Ø6
08 : Ø8
10 : Ø10
12 : Ø12
16 : Ø16

③ Thread

R(PT), Rc(PT)
M5 : M5
M6 : M6
01 : 1/8
02 : 1/4
03 : 3/8
04 : 1/2

④ Plating

Nil : Standard
N : Nickel
* Custom made of G thread type & NPT thread type is available.

Specifications

- One action inserts the Tube to release and connect easily.
- The EC type has interior and exterior hexagonal shapes for efficient piping in limited spaces.
- The main body of the PL and PT types is a rotating structure for efficient piping.
- The screw section has O-ring, or Teflon coated.

Fluid	Air (No other type of gas or liquid)
Working Pressure	0~150PSI / 0~9.9kgf/cm ² (0~0.99MPa) * Refer to tube max. working pressure, as tube is integrated with fitting.
Negative Pressure	-29.5 in Hg / -750mmHg(-750Torr)
Working Temperature	32~140°F / 0~60°C
Applicable Tube	Polyurethane and Nylon

Model	EC	EL	ET	EY	ELL	EST	EPFC	EFC	EH	EOC	
Snapshot											
ØD	R	D	D	R	R	R	Rc	Rc	R	R	
Ø3	M5								EH03M5(100)		
Ø4	M5	EC04M5(100)	EL04M5(100)	ET04M5(100)	EY04M5(100)	ELL04M5(50)	EST04M5(100)		EFC04M5(100)	EH04M5(50)	EOC04M5(100)
	M6	EC04M6(100)	EL04M6(100)	ET04M6(100)	EY04M6(100)	ELL04M6(50)	EST04M6(100)			EH04M6(50)	EOC04M6(100)
	1/8	EC0401(100)	EL0401(100)	ET0401(100)	EY0401(100)	ELL0401(50)	EST0401(100)	EPFC0401(100)	EFC0401(100)	EH0401(50)	EOC0401(100)
	1/4	EC0402(100)	EL0402(100)	ET0402(100)	EY0402(100)	ELL0402(50)	EST0402(100)	EPFC0402(100)	EFC0402(100)	EH0402(50)	EOC0402(100)
	3/8	EC0403(100)	EL0403(100)	ET0403(50)	EY0403(50)	ELL0403(50)	EST0403(50)	EPFC0403(100)	EFC0403(100)	EH0403(50)	EOC0403(100)
Ø6	M5	EC06M5(100)	EL06M5(100)	ET06M5(50)	EY06M5(50)	ELL06M5(50)	EST06M5(50)		EFC06M5(100)	EH06M5(50)	EOC06M5(100)
	M6	EC06M6(100)	EL06M6(100)	ET06M6(50)	EY06M6(50)	ELL06M6(50)	EST06M6(50)			EH06M6(50)	EOC06M6(100)
	1/8	EC0601(100)	EL0601(100)	ET0601(50)	EY0601(50)	ELL0601(50)	EST0601(50)	EPFC0601(100)	EFC0601(100)	EH0601(50)	EOC0601(100)
	1/4	EC0602(100)	EL0602(100)	ET0602(50)	EY0602(50)	ELL0602(50)	EST0602(50)	EPFC0602(100)	EFC0602(100)	EH0602(50)	EOC0602(100)
	3/8	EC0603(100)	EL0603(50)	ET0603(50)	EY0603(50)	ELL0603(50)	EST0603(50)	EPFC0603(50)	EFC0603(50)	EH0603(25)	EOC0603(100)
Ø8	1/2	EC0604(50)	EL0604(50)	ET0604(25)	EY0604(25)	ELL0604(25)	EST0604(25)		EFC0604(50)	EH0604(25)	
	1/8	EC0801(100)	EL0801(50)	ET0801(50)	EY0801(50)	ELL0801(50)	EST0801(50)	EPFC0801(50)	EFC0801(100)	EH0801(50)	EOC0801(100)
	1/4	EC0802(100)	EL0802(50)	ET0802(50)	EY0802(50)	ELL0802(50)	EST0802(50)	EPFC0802(50)	EFC0802(100)	EH0802(50)	EOC0802(100)
	3/8	EC0803(100)	EL0803(50)	ET0803(50)	EY0803(50)	ELL0803(25)	EST0803(50)	EPFC0803(50)	EFC0803(50)	EH0803(25)	EOC0803(100)
	1/2	EC0804(50)	EL0804(50)	ET0804(25)	EY0804(25)	ELL0804(25)	EST0804(25)	EPFC0804(50)	EFC0804(50)	EH0804(20)	EOC0804(50)
Ø10	1/8	EC1001(100)	EL1001(50)	ET1001(25)	EY1001(25)	ELL1001(25)	EST1001(25)	EPFC1001(50)	EFC1001(100)	EH1001(25)	EOC1001(100)
	1/4	EC1002(100)	EL1002(50)	ET1002(25)	EY1002(25)	ELL1002(25)	EST1002(25)	EPFC1002(50)	EFC1002(100)	EH1002(25)	EOC1002(100)
	3/8	EC1003(100)	EL1003(50)	ET1003(25)	EY1003(25)	ELL1003(25)	EST1003(25)	EPFC1003(50)	EFC1003(50)	EH1003(25)	EOC1003(100)
	1/2	EC1004(50)	EL1004(25)	ET1004(25)	EY1004(25)	ELL1004(25)	EST1004(25)	EPFC1004(25)	EFC1004(50)	EH1004(20)	EOC1004(50)
	Ø12	1/8	EC1201(50)	EL1201(25)	ET1201(25)	EY1201(25)	ELL1201(25)	EST1201(25)	EPFC1201(25)		
1/4		EC1202(50)	EL1202(25)	ET1202(25)	EY1202(25)	ELL1202(25)	EST1202(25)	EPFC1202(25)	EFC1202(50)		EOC1202(50)
3/8		EC1203(50)	EL1203(25)	ET1203(25)	EY1203(25)	ELL1203(25)	EST1203(25)	EPFC1203(25)	EFC1203(50)	EH1203(25)	EOC1203(50)
1/2		EC1204(50)	EL1204(25)	ET1204(20)	EY1204(25)	ELL1204(25)	EST1204(20)	EPFC1204(25)	EFC1204(25)	EH1204(20)	EOC1204(50)
Ø16		3/8	EC1603(25)	EL1603(20)	ET1603(12)						
	1/2	EC1604(25)	EL1604(20)	ET1604(12)							

Model	ER	ERL	EUR	EWJ	ERY	EKG	EKJ	Model	EKD			
Snapshot								Snapshot				
ØD	Ød							D	d			
Ø6	Ø4	ER0604(100)	ERL0604(100)	EUR0604(100)	EWJ0604(100)	ERY0604(100)	EKG0604(25)	EKJ0604(25)	Ø6	Ø4	1/8	EKD0604-01(25)
	Ø8	ER0804(100)		EUR0804(100)		ERY0804(50)	EKG0804(25)	EKJ0804(25)	Ø8	Ø4	1/8	EKD0804-01(25)
Ø8	Ø6	ER0806(100)	ERL0806(50)	EUR0806(100)	EWJ0806(50)	ERY0806(50)	EKG0806(25)	EKJ0806(25)		Ø4	1/4	EKD0804-02(25)
	Ø10	Ø6	ER1006(50)		EUR1006(50)		ERY1006(25)	EKG1006(25)	EKJ1006(25)	Ø6	1/8	EKD0806-01(25)
Ø8		ER1008(50)	ERL1008(50)	EUR1008(50)	EWJ1008(50)	ERY1008(25)	EKG1008(25)	EKJ1008(25)	Ø6	1/4	EKD0806-02(25)	
Ø12	Ø6	ER1206(50)							Ø10	Ø6	1/4	EKD1006-02(25)
	Ø8	ER1208(50)		EUR1208(50)		ERY1208(25)				Ø6	3/8	EKD1006-03(20)
	Ø10	ER1210(50)	ERL1210(25)	EUR1210(50)	EWJ1210(25)	ERY1210(25)				Ø8	1/4	EKD1008-02(25)
Ø16	Ø12			EUR1612(25)					Ø8	3/8	EKD1008-03(20)	

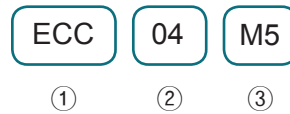
One Touch Fitting

Model	EUT	EUY	EUC	EUL	EPC	EBC	EYA	EAL	EZA
Snapshot									
Ø4	EUT04(100)	EUY04(100)	EUC04(100)	EUL04(100)	EPC04(100)	EBC04(100)	EYA04(100)	EAL04(100)	EZA04(50)
Ø6	EUT06(50)	EUY06(50)	EUC06(100)	EUL06(100)	EPC06(100)	EBC06(100)	EYA06(50)	EAL06(50)	EZA06(50)
Ø8	EUT08(50)	EUY08(50)	EUC08(50)	EUL08(50)	EPC08(50)	EBC08(100)	EYA08(50)	EAL08(50)	EZA08(25)
Ø10	EUT10(25)	EUY10(25)	EUC10(50)	EUL10(50)	EPC10(50)	EBC10(100)	EYA10(25)	EAL10(50)	EZA10(25)
Ø12	EUT12(25)	EUY12(25)	EUC12(25)	EUL12(25)	EPC12(25)	EBC12(100)	EYA12(25)	EAL12(25)	EZA12(20)
Ø16	EUT16(15)		EUC16(25)	EUL16(20)	EPC16(25)	EBC16(50)		EAL16(20)	

COMPACT ONE TOUCH FITTING series

Compact One Touch Fitting

How to Order



① Series

Refer To Bottom Table

② Tube Outer Dia

03 : Ø3
04 : Ø4
06 : Ø6

③ Thread

R(PT), Rc(PT)
M3 : M3
M4 : M4
M6 : M6
01 : 1/8

* Custom made of G thread type & NPT thread type is available.

- One action can insert the Tube to easy connection and release.
- Volume and OD are smaller than the regular type, but same flux is obtained
- Treated with electroless nickel coating on the surface for excellent tolerance to corrosion.
- Oval sleeve is designed to allow easy release in the limited space.
- The screw section has o-ring, teflon coated.
- Miniaturized fitting for samll devices and piping in limited spaces.

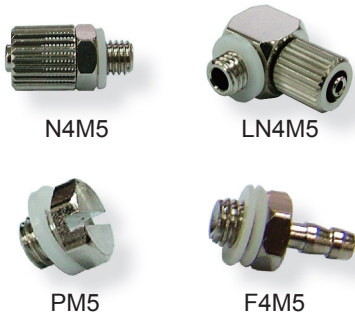
Specifications

Fluid	Air
Working Pressure	0~150PSI / 0~9.9kgf/cm ² (0~0.99MPa) *Refer to tube max. working pressure, as tube is integrated with fitting.
Negative Pressure	-29.5 in Hg / -750mmHg (-750Torr)
Working Temperature	32~140°F / 0~60°C
Applicable Tube	Polyurethane, Nylon

Model	ECC	ELC	EFCC	ELLC	ETC	EOCC	ESTC	
Snapshot								
Ø	R	D	Rc	D	R	R	D	
Ø3	M3	ECC03M3(100)	ELC03M3(100)	EFCC03M3(100)	ELLC03M3(100)	ETC03M3(100)	EOCC03M3(100)	ESTC03M3(100)
	M5	ECC03M5(100)	ELC03M5(100)	EFCC03M5(100)	ELLC03M5(100)	ETC03M5(100)	EOCC03M5(100)	ESTC03M5(100)
	M6	ECC03M6(100)	ELC03M6(100)	EFCC03M6(100)	ELLC03M6(100)	ETC03M6(100)	EOCC03M6(100)	ESTC03M6(100)
	1/8	ECC0301(100)						
Ø4	M3	ECC04M3(100)	ELC04M3(100)	EFCC04M3(100)	ELLC04M3(100)	ETC04M3(100)	EOCC04M3(100)	ESTC04M3(100)
	M5	ECC04M5(100)	ELC04M5(100)	EFCC04M5(100)	ELLC04M5(100)	ETC04M5(100)	EOCC04M5(100)	ESTC04M5(100)
	M6	ECC04M6(100)	ELC04M6(100)		ELLC04M6(100)	ETC04M6(100)	EOCC04M6(100)	ESTC04M6(100)
	1/8	ECC0401(100)	ELC0401(100)	EFCC0401(100)	ELLC0401(100)	ETC0401(100)	EOCC0401(100)	ESTC0401(100)
Ø6	M5	ECC06M5(100)	ELC06M5(100)	EFCC06M5(100)	ELLC06M5(100)	ETC06M5(100)	EOCC06M5(100)	ESTC06M5(100)
	M6	ECC06M6(100)	ELC06M6(100)	EFCC06M6(100)	ELLC06M6(100)	ETC06M6(100)	EOCC06M6(100)	ESTC06M6(100)
	1/8	ECC0601(100)	ELC0601(100)	EFCC0601(100)	ELLC0601(100)	ETC0601(100)	EOCC0601(100)	ESTC0601(100)

Model	EURC	ERYC	ERC	Model	EUTC	EUYC	EUCC	EULC	EPCC	
Snapshot				Snapshot						
ØD	Ød	D	d							
Ø3	Ø4	EURC0304(100)	ERYC0304(100)	ERC0304(100)	Ø3	EUTC03(100)	EUYC03(100)	EUCC03(100)	EULC03(100)	EPCC03(100)
Ø3	Ø6	EURC0306(100)	ERYC0306(100)	ERC0306(100)	Ø4	EUTC04(100)	EUYC04(100)	EUCC04(100)	EULC04(100)	EPCC04(100)
Ø4	Ø6	EURC0406(100)	ERYC0406(100)	ERC0406(100)	Ø6	EUTC06(100)	EUYC06(100)	EUCC06(100)	EULC06(100)	EPCC06(100)

Metal Two Touch Fitting



- Suitable for small equipment and narrow space installation.
- A variety of installation methods are available, such as I-type, L-type, hose direct connection and etc.
- Nylon Tube and polyurethane Tube is adaptable.

How to Order



① Series

- N : Straight Type
- LN : Elbow Type
- F : Straight Type(Direct Input)
- P : Plug

② Tube outer diameter

- Nil : None (PM5 Model)
- 4 : Ø4 Tube
- 6 : Ø6 Tube

③ Thread

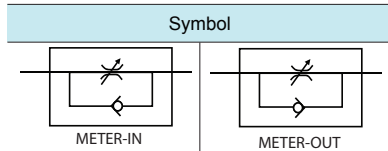
- M5 : M5×0.8
- 01 : R(PT) 1/8
- ※ Type 01 is unavailable for LN, F, P series.

Specifications

Fluid	Air (No other type of gas or liquid)	
Applicable Tube	Nylon	Polyurethane
Applicable Tube Size	Ø4-Ø2.5 Ø6-Ø4	
Max. Working Pressure (At 20)	15kgf/cm ² (1.5MPa)	8kgf/cm ² (0.8MPa)
Working Temperature	0~60℃	
Thread	M5, R(PT)1/8	

SC, SCS series

Speed Controller



- Accurate regulation of an optimal air flow rate for precise motion control.
- Tube direction and angle are controlled according to piping as the main body can rotate up to 360 after assembly.
- Needle rotation is increased to 10-12 times for easy speed and regular speed control.
- Miniaturized products occupy small space attaching to devices.

How to Order



① Series

- SC : Elbow Type
- SCS : Straight Type

② Thread

- M5 : M5×0.8
- 01 : R(PT)1/8
- 02 : R(PT)1/4
- 03 : R(PT)3/8
- 04 : R(PT)1/2

③ Tube Outer Dia

- 03 : 3Ø Tube
- 04 : 4Ø Tube
- 06 : 6Ø Tube
- 08 : 8Ø Tube
- 10 : 10Ø Tube
- 12 : 12Ø Tube

④ Control Type

- Nil : Meter-Out(Black)-Standard
- IN : Meter-In(Green)

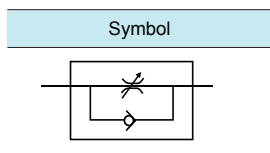
※ Refer to tube max. working pressure, as tube is integrated with fitting.

Specifications

Fluid	Air (No other gases or liquids)	
Operating Pressure	0~9.9kgf/cm ² (0.99MPa)	
Negative Pressure	※ Refer to tube max. working pressure, as tube is integrated with fitting.	
Working Temperature	-750mmHg(10Torr)	
Applicable Tube	0~60℃	
	Polyurethane, Nylon	

SC-F series

Speed Controller



How to Order



① Series

- SC : Speed Controller With One Touch Fitting Type(Piping Type)

② Body Size

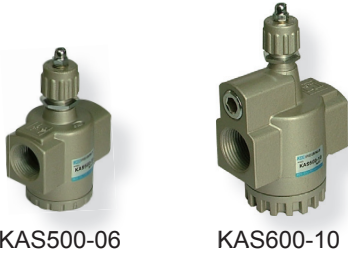
- 1000F-04 : M5 Standard, 4Ø Tube
- 2000F-06 : 1/8 Standard, 6Ø Tube
- 2050F-08 : 1/4 Standard, 8Ø Tube
- 3000F-10 : 3/8 Standard, 10Ø Tube
- 4000F-12 : 1/2 Standard, 12Ø Tube

Specifications

Fluid	Air (No other gases or liquids)	
Operating Pressure	0~9.9kgf/cm ² (0.99MPa)	
Negative Pressure	※ Refer to tube max. working pressure, as tube is integrated with fitting.	
Working Temperature	-750mmHg(10Torr)	
Applicable Tube	0~60℃	
	Polyurethane, Nylon	

- Accurate regulation of an optimal air flow rate for precise motion control.
- Needle rotation is increased to 10-12 times for easy speed and regular speed control.
- Air flow from the both side of one touch fitting.
- Piping as shown on the body can control and adjust free flow.

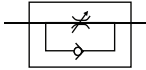
Piping Type Speed Controller (Large Flow)



KAS500-06

KAS600-10

Symbol



- Able to control and set a constant speed.
- Speed may be controlled easily at low flow.
- Retainer prevents accidental loss of needle.

How to Order

KAS 500 - 06

① ② ③

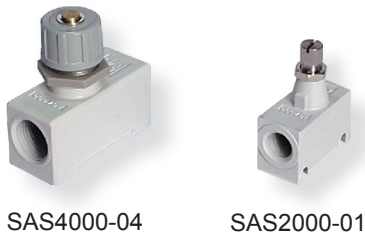
- | | | |
|--|---|--|
| ① Series
KAS : Piping Type Speed Controller | ② Body Size
500 : 3/4 Standard
600 : 1 Standard | ③ Thread
06 : Rc(PT) 3/4
10 : Rc(PT) 1 |
|--|---|--|

Specifications

Model	Thread	Free Flow		Controlled Flow		Applicable Cylinder Bore Size
		Flow Rate (l/min)	Effective Area(mm ²)	Flow Rate (l/min)	Effective Area(mm ²)	
KAS 500-06	Rc(PT) 3/4	10,100	154	8,100	123	Ø140, Ø160, Ø180, Ø200
KAS 600-10	Rc(PT) 1	15,100	230	16,900	258	Ø160, Ø180, Ø200, Ø250
Fluid		Air				
Proof Pressure		15.0kgf/cm ² (1.5MPa)				
Max. Operating Pressure		10.0kgf/cm ² (1.0Mpa)				
Min. Operating Pressure		0.50kgf/cm ² (0.05Mpa)				
Ambient and Fluid Temperature		-5~60℃ (No Freezing)				
Number of Niddle Rotations		10 Turns				
Weight	KAS500-06	330g				
	KAS600-10	686g				

SAS series

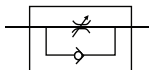
Piping Type Speed Controller



SAS4000-04

SAS2000-01

Symbol



- Compact design
- Able to control and set a constant speed.
- Speed may be controlled easily at low flow.
- Retainer prevents accidental loss of needle.

How to Order

SAS 2000 - 01

① ② ③

- | | |
|--|---|
| ① Series
SAS : Piping Type Speed Controller | ② Body Size
2000 : 1/4 Standard
4000 : 1/2 Standard |
|--|---|

	Thread	Body Size	
		2000	4000
01	(Rc(PT)1/8)	•	
02	(Rc(PT)1/4)	•	•
03	(Rc(PT)3/8)		•
04	(Rc(PT)1/2)		•

Specifications

Model	Thread	Free Flow		Controlled Flow		Applicable Cylinder Bore Size
		Flow Rate (l/min)	Effective Area(mm ²)	Flow Rate (l/min)	Effective Area(mm ²)	
SAS2000-01	1/8	340	5.2	250	3.8	Ø20, Ø25, Ø32, Ø40
SAS2000-02	1/4	340	5.2	250	3.8	
SAS4000-02	1/4	1670	25.5	1670	25.5	Ø40, Ø50, Ø63, Ø80, Ø100
SAS4000-03	3/8	1670	25.5	1670	25.5	
SAS4000-04	1/2	1670	25.5	1670	25.5	

*Input Pressure: 5kgf/cm², Temperature: 20℃

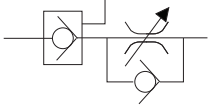
Fluid		Air	
Proof Pressure		15.0kgf/cm ² (1.5MPa)	
Operating Pressure		0~9.7kgf/cm ² (0~0.97MPa)	
Ambient and Fluid Temperature		-5~60℃ (No freezing)	
Number of Niddle Rotations		8 Turns	
Weight	SAS2000-01	48g	
	SAS2000-02	58g	
	SAS4000-02	235g	
	SAS4000-03	214g	
	SAS4000-04	204g	

Speed Controller With Pilot Check Valve



SCPV

Symbol



- Combined with pilot check valve and speed controller.
- Enables 360° free direction of tubing mount.

How to Order

SCPV 01 06

① ② ③

① Series

SCPV : Speed Controller With Pilot Check Valve

② Thread

R(PT)	01	R(PT) 1/8
	02	R(PT) 1/4
	03	R(PT) 3/8
	04	R(PT) 1/2

③ Tube Outer Dia

06 : Ø6 Tube
08 : Ø8 Tube
10 : Ø10 Tube
12 : Ø12 Tube

※ Custom made of G thread type & NPT thread type is available.

Specifications

Fluid	Air
Operating Pressure	1~9.9kgf/cm ² (100~0.99MPa) ※ Refer to tube max. working pressure, as tube is integrated with fitting.
Negative Pressure	-750mmHg(750Torr)
Working Temperature	0~60℃
Applicable Tube	Polyurethane, Nylon

KHVC, KHVF, KHVU, KHVM series

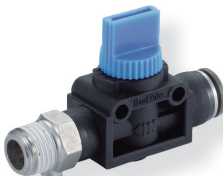
Hand Valve With One Touch Fitting



KHVC



KHVU



KHVF



KHVM

How to Order

KH VC 06 - 01

① ② ③ ④

① Series

KH : Hand Valve With One Touch Fitting

② Type

VC : OUT-Tube, IN-Thread
VF : IN- Tube, OUT-Thread
VU : IN/OUT-Tube Type
VM : IN/OUT-Thread Type

③ Out Port Size

Thread		Tube	
01	R(PT) 1/8	06	Ø6
02	R(PT) 1/4	08	Ø8
03	R(PT) 3/8	10	Ø10
04	R(PT) 1/2	12	Ø12

④ In Port Size

Thread		Tube	
01	R(PT) 1/8	06	Ø6
02	R(PT) 1/4	08	Ø8
03	R(PT) 3/8	10	Ø10
04	R(PT) 1/2	12	Ø12

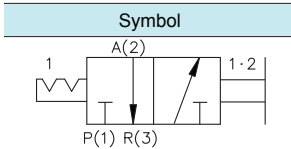
※ Custom made of G thread type & NPT thread type is available.

Specifications

Fluid	Air (No other gases or liquids)
Operating Pressure	0~9.9kgf/cm ² (0.99MPa) ※ Refer to tube max. working pressure, as tube is integrated with fitting.
Negative Pressure	-750mmHg(-750Torr)
Working Temperature	0~60℃
Applicable Tube	Polyurethane, Nylon

- This product switches compressed air on/off air pressure device by simply turning the handle.
- Maintenance or in spection is possible when the remaining pressure in the device is removed.
- A three-way valve discharges the remaining pressure out, and block the incoming air in the off state.
- There ar 4 type available depending on the method applied to air pressure flow.

Hand Slide Valve



- Made of brass or aluminium for long service life.
- Hand slide valve, when the airflow is stopped, discharges residual pressure to air.
- With OFF, which assures safety in repairing or adjusting connected devices.

How to Order

SH 02

① ②

① Series
SH : Hand Slide Valve

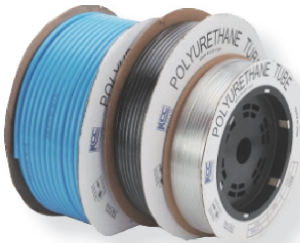
② Thread
M5 : M5×0.8
01 : R(PT) 1/8
02 : R(PT) 1/4
03 : R(PT) 3/8
04 : R(PT) 1/2
06 : R(PT) 3/4

Specifications

Fluid	Air (No other gases or liquids)
Operating Pressure	0~9.9kgf/cm ² (0.99MPa) *Refer to tube max. working pressure, as tube is integrated with fitting.
Negative Pressure	-750mmHg(-750Torr)
Working Temperature	0~60℃
Applicable Tube	Polyurethane, Nylon

U series

Polyurethane Tube



Tube Length 100M



Tube Length 30M

- Excellent flexibility makes it easy to pipe.
- Excellent in chemical resistance and water proof.
- Excellent durability

How to Order

U 4-2 B - 30M

① ② ③ ④

① Series
U : Polyurethane Tube

② Outer Diameter & Inner Diameter

4-2	Ø4-Ø2	10-6.5	Ø10-Ø6.5
4-2.5	Ø4-Ø2.5	12-8	Ø12-Ø8
6-4	Ø6-Ø4	16-12	Ø16-Ø12
8-5	Ø8-Ø5		

③ Color

B	Blue	O	Orange
C	Clear	R	Red
D	Black	S	Blue Sky
G	Green	Y	Yellow

④ Length (m)

Nil : 100m (Standard)
30M : 30m

Specifications

Model	Outer Dia. mm	Inner Dia. mm	Min. Bending Radius mm	Proof Pressure kgf/cm ² (At 20℃)	Max Working Pressure kgf/cm ² (At 20℃)	Temperature	Fluid	Material	Color
U4-2	4	2	10	27	8	-5~60℃	Air	Polyurethane	Blue, Clear, Black, Green, Orange, Red, Blue Sky, Yellow
U4-2.5		2.5							
U6-4	6	4.0	15						
U8-5	8	5.0	20						
U10-6.5	10	6.5	27						
U12-8	12	8.0	35						
U16-12	16	12.0							

Nylon Tube

How to Order



N **4-2** **D**

① ② ③

① Series
N : Nylon Tube

② Outer Diameter & Inner Diameter

	Metric		Inch
4-2	Ø4-Ø2	1/4	Ø6.35-Ø4.5
4-2.5	Ø4-Ø2.5	3/8	Ø9.5-Ø7
6-4	Ø6-Ø4	1/2	Ø12.7-Ø9.5
8-6	Ø8-Ø6		
10-8	Ø10-Ø8		
12-9	Ø12-Ø9		
16-13	Ø16-Ø13		

③ Color
C : Clear
D : Black
W : White

- Strong in pressure resistance, abrasion resistance and flexion resistance.
- Appropriate to use with air, water, oil, chemical and etc.
- There is almost no decline in performance or no change in measurement.

Specifications

Model	Outer Dia. mm	Inner Dia. mm	minimum radius of curvature mm	Fracture Pressure kgf/cm ² (At 20°C)	Max Working Pressure kgf/cm ² (At 20°C)	Temperature	Fluid	Material	Color
N4-2	4	2	10	80	15	-20~60°C	Air	Nylon	Black, Clear, White
N4-2.5	4	2.5	20						
N6-4	6	4	35						
N8-6	8	6							
N10-8	10	8	45	50					
N12-9	12	9.0							
N16-13	16	13.0	100						
N1/4	6.35	4.5	20	80					
N3/8	9.5	7	35	50					
N1/2	12.7	9.5	45						

PFA, PTFE series

Teflon Tube

How to Order



PTFE **4-2**

① ②

① Series
PFA : Teflon Tube (PFA)
PTFE : Teflon Tube (PTFE)

② Outer Diameter & Inner Diameter

	Metric			Inch	
4-2	Ø4-Ø2	12-10	Ø12-Ø10	1/4	Ø6.35-Ø4.5
6-4	Ø6-Ø4	14-12	Ø14-Ø12	3/8	Ø9.5-Ø7
8-6	Ø8-Ø6	16-14	Ø16-Ø14	1/2	Ø12.7-Ø9.5
10-8	Ø10-Ø8	19-17	Ø19-Ø17	3/4	Ø19-Ø16
				1	Ø25.4-Ø22

Specifications

Model	Outer Dia. mm	Inner Dia. mm	Fracture Pressure kgf/cm ² (At 20°C)	Minimum Bending Radius mm	Max Working Pressure kgf/cm ² (At 20°C)	Length m	Temp.	Fluid	Material	Color
PFA4-2	PTFE4-2	4	2	100	25	25	-65°C ~260°C	Air, Water, Chemical	PFA Tube: PFA	PFA Tube: Clear
PFAE6-4	PTFE6-4	6	4	65	30	16				
PFA8-6	PTFE8-6	8	6	45	50	11				
PFA10-8	PTFE10-8	10	8	35	70	8				
PFA12-10	PTFE12-10	12	10	30	100	7				
PFA14-12	PTFE14-12	14	12	24	150	6				
PFA16-14	PTFE16-14	16	14	18	-	4				
PFA19-17	PTFE19-17	19	17	12	400	3				
PFA1/4	PTFE1/4	6.35	3.96	70	45	17				
PFA3/8	PTFE3/8	9.5	6.5	60	60	15				
PFA1/2	PTFE1/2	12.7	9.7	45	90	13				
PFA3/4	PTFE3/4	19	16	24	400	6				
PFA1	PTFE1	26	23	-	-	-				

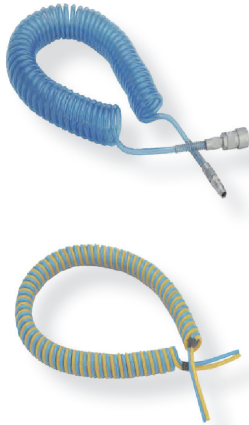
PTFE (Polytetrafluoroethylene)

- It is a representative product among the kinds of tetrafluoroethylene. Its continuous service temperature is 260fl and its general characteristics are similar to PFA. It is widely used in various industrial fields such as electrical industry, electronics industry, chemical industry, medical device industry, and semiconductor industry.

PFA (Perfluoroalkoxy)

- When compared with PTFE, it is superior in the standard intensity of illumination on the surface. Therefore, almost no dust or foreign matters are attached to it. It is applicable to almost all fluids which are excellent in chemical resistance.
- As it is excellent in transparency, you can see the fluid inside.
- As it is excellent in weathering and anti-corrosion, it is not aged.

Polyurethane Coil Hose



- Excellent cold resistance, impact resistance, light weight and easy to be used.
- Easy to use at pneumatic tool, lubrication equipment, pneumatic equipment.
- 2 coil and 3 coil type can be used for various purposes.

How to Order

UC 0805 - 50 -

① ② ③ ④

- | | |
|--|--|
| <p>① Series
UC : Polyurethane Coil Hose</p> <p>② Color
0604 : Ø6-Ø4
0805 : Ø8-Ø5
1065 : Ø10-Ø6.5
1208 : Ø12-Ø8</p> | <p>③ Length
50 : 5m
75 : 7.5m
100 : 10m</p> <p>④ Number of coil
Nil : 1coil (Standard)
2 : 2coil
3 : 3coil</p> |
|--|--|

Specifications

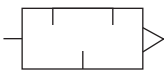
Model	UC0604			UC0805			UC1065	UC1208
	1coil	2coil	3coil	1coil	2coil	3coil	1coil	1coil
Number of coil								
Outer Dia.	6			8			10	12
Inner Dia.	4			5			6.5	8
Fluid	Air							
Max Working Pressure(20°C When)	8kgf/cm ² (0.8MPa)							
Temperature	-5~60°C							
Material	Polyurethane							
Color	Blue Sky (Standard)							

SAS series

Plastic Silencer



Symbol



Specifications

Model	Thread	Effective Area (mm ²)	Noise Reduction (dB(A))	Weight (g)	Feature
SAS01	R(PT) 1/8	15	14	1.8	
SAS02	R(PT) 1/4	35	18	14	
SAS02-1	R(PT) 1/4	20	16	4	Small type
SAS03	R(PT) 3/8	60	22	24	
SAS04	R(PT) 1/2	90	22	32	
SAS06	R(PT) 3/4	200	23	66	
SAS08	R(PT) 1	230	22	66	

Fluid	Air
Max Working Pressure	10.2kgf/cm ² (1.02MPa)
Material	Plastic Resin (PE)
Temperature	5~60°C

- Light weight and long service life with the use of corrosion-resistant material.
- Mount at air exhaust port can reduce noise effectively.
- Easy to install with small size.

KAN series

Mass Flow (Steel) Silencer



Symbol



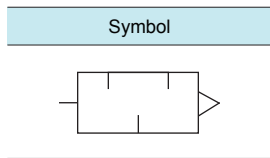
Specifications

Model	Thread	Effective Area (mm ²)	Weight (g)
KAN500-06	R(PT) 3/4	160	160
KAN600-10	R(PT) 1	270	204
KAN700-12	R(PT) 1 1/4	440	476
KAN800-14	R(PT) 1 1/2	590	578
KAN900-20	R(PT) 2	960	866

Fluid	Air
Max Working Pressure	10.2kgf/cm ² (1.02MPa)
Noise Reduction	≥ 20dB(A)
Temperature	5~60°C

- Excellent noise reduction effect.
- Reduce noise up to 20 dB(A)
- Silencer with low ventilation resistance.

Sintered Silencer



- Excellent noise reduction and filtering in dry condition.

How to Order

SL 01 -

① ② ③

① Series
SL : Sintered Silencer

② Thread
M5 : M5×0.8
01 : R(PT) 1/8
02 : R(PT) 1/4
03 : R(PT) 3/8
04 : R(PT) 1/2
06 : R(PT) 3/4
08 : R(PT) 1

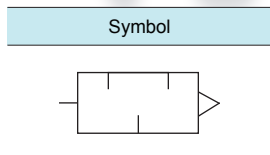
③ Option
Nil : Standard (Hexagon)
1 : Circle
2 : Short Circle
* Applicable to SL01

Specifications

Classification	SLM5	SL01	SL02	SL03	SL04	SL06	SL08
Noise Reduction dB(A)	10	14	18	22	22	23	22
Fluid	Air						
Max. Working Pressure	10kgf/cm ² (1.0MPa)						
Temperature	-10~180℃						
Effective Area (mm ²)	8	18	40	60	115	210	290
Material	Bronze Sintered						
Weight (g)	3	8 <small>Round type:14 Short round type:8</small>	18	32	42	82	162

AIR VENT series

Air Vent



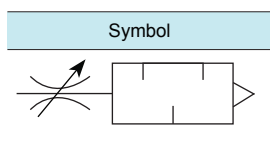
Specifications

Classification	AIR VENT-M5	AIR VENT-01	AIR VENT-02	AIR VENT-03	AIR VENT-04	AIR VENT-06	AIR VENT-08
Fluid	Air						
Operating Pressure	10kgf/cm ² (1.0MPa)						
Temperature	-10~180℃						
Material	Bronze Sintered						
Weight	2.0g	5.3g	10.5g	16.9g	28.8g	39.1g	80.1g

- More compact in size than conventional type.
- Applicable in narrow space such as gear box, receiver tank single acting cylinder and etc.

JASN series

Speed Controller with Silencer



- Noise reduction effect of 20dB(A) at a max. flow.
- Easy to control cylinder speed.
- Retainer prevents accidental loss of needle.

How to Order

JASN - 01

① ②

① Series
JASN : Speed Controller with Silencer

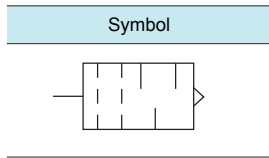
② Thread
M5 : M5×0.8
01 : R(PT) 1/8
02 : R(PT) 1/4
03 : R(PT) 3/8
04 : R(PT) 1/2

Specifications

Classification	JASN-M5	JASN-01	JASN-02	JASN-03	JASN-04
Thread R(PT)	M5X0.8	1/8	1/4	3/8	1/2
Effective Area (mm ²)	1.8	3.6	6.5	16.6	24.5
Weight	8	24	44	84	132
Proof Pressure	15kgf/cm ² (1.5MPa)				
Working Pressure	0~10kgf/cm ² (0~1.0MPa)				
Temperature	-5~60℃ (No Freezing)				
Number Of Middle Rotations	10 Turns (note)8 Turns				

Note) () : Denotes the value of JASN-M5 type.

Exhaust Cleaner



- Ensures clean plant air and reduces noise pollution
- Over 35 dB (A) noise reduction
- Over 99.9% oil mist removal

How to Order

KMC 220 - 02 B

① ② ③ ④

- ① Series
KMC : Exhaust Cleaner
- ② Body Size
220 : 1/4 Standard
320 : 3/8 Standard
420 : 1/2 Standard
- ③ Thread
02 : Rc(PT) 1/4
03 : Rc(PT) 3/8
04 : Rc(PT) 1/2
- ④ Option
B : Bracket

Specifications

Fluid	Air
Temperature	5~60℃
Element inlet pressure	≤ 1kgf/cm ² (0.12MPa)
Noise Reduction	35dB(A) Over
Oil mist removal	99.9% Over
Filtration	Drain Coke
Option	Bracket
Weight	358g

AFE series

Filter Element



- Mainly used to reduce exhaust noise of pneumatic equipment or pneumatic solenoid valve.

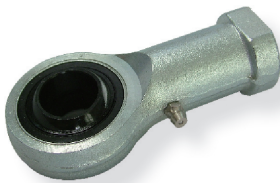
Specifications

	Outer Dia×Inner Dia×Length		Outer Dia×Inner Dia×Length
AFE-100	18×15×30	AFE-500	35×31×71
AFE-200	21×18×33	AFE-5000	39×35×67
AFE-3000	23×20×33	AFE-600	44×40×80
AFE-4000	29×26×60	AFE-800	60×56×120
		AFE-900	73×67×180

Filtration	5μ
Material	Phosphor Bronze

JF series

Rod End Bearing



Specifications

Model	Thread	Applicable Pneumatic Cyl Bore Size	Applicable Hydraulic Cyl Bore Size
JF5	M5×0.8	Ø16	-
JF6	M6×1.0	-	-
JF8	M8×1.25	Ø20	-
JF10	M10×1.25	Ø25, Ø30, Ø32	-
JF12	M12×1.75	-	-
JF14	M14×1.5	Ø40	-
JF16	M16×1.5	-	For Ø40C
JF18	M18×1.5	Ø50, Ø63	-
JF20	M20×1.5	-	For Ø40B/50C
JF22	M22×1.5	Ø80	-
JF24	M24×1.5	-	For Ø50B/63C
JF25	M26×1.5	Ø100	-
JF30	M30×1.5	Ø125, Ø140	For Ø63B/80C
JF35	M36×1.5	Ø150, Ø160	-

- Rod ends are mainly used in the construction of control rod linkages, where tractive and compressive loads have to be transmitted through arrangements of adjustable control rods in various industrial fields.
- It has a superior performance especially in rotational and oscillating motions.

